



SERIES



STANDARD KANGA KEY FEATURES

- Self-Levelling Bucket**
Linkage makes it impossible for operator to tip load over self or machine. Reduces cycle times. Safe, easy operation even for the 'handyman'.
- Generous Bucket Roll Back**
Allows easy filling and safe transportation without load spillage, arms fully lowered (lower center of gravity).
- Machine Balance**
Superior design enables loader to remain balanced either fully loaded or bucket removed.
- Perforated operator platform**
Non-slip, free from hot engine obstruction.
- Soft-touch controls**
Simple, easy-to-understand control panel - minimises operator fatigue.
- Auxiliary Safety Cutout**
Power to the attachment is cut when the controls are released ensuring maximum safety for the operator.
- Long-life linkage pins**
Greasable pins ensure extended cycle life of pins and bushes.
- V-Twin petrol engine**
The right capacity to suit your needs and budget.
- Narrow Access**
With an overall width of 770mm for the wheel machine and 800mm for the track machine the Kanga Kid can access the work site through side gates and standard doorways.
- Oil Cooler (option)**



Fastest Quick Hitch
Change attachments in a matter of seconds.

Full-Flow Auxiliary
Hydraulic Power Outlet.

Improved Soft Touch Controls
- Even Smoother to Drive
- Improved Operator Ergonomics
- Improved Safety, all controls deadman type

Power V-Twin Engine
- Fuel Efficient
- High output performance
- Reliable
- Easy to Use
- Easy to Maintain
- Quiet
- Easy Start

Ground Conditions
Choice of Heavy Duty Tracks or Wheels

Larger Operators Platform
Wide stance for improved safety and fatigue reduction

Every Kanga is engineered for SAFE, user-friendly operation and peace-of-mind.

No wonder individuals and businesses, looking for the best value multi-task skid steer loader on the market, turn to Kanga.

All models incorporate standard features that offer Kanga operators an edge in power, speed, durability, ease-of-use and safety. If you compare you will see why Kanga multi-task compact skid steer loaders are being successfully exported to rapidly-expanding markets throughout the world.

A special range of quick hitch attachments makes the Kanga Kid the World's most versatile and safest mini equipment, capable of digging, carrying, trenching, post-holeing, planting, levelling and much much more. Choosing a Kanga will reduce your labour costs dramatically and improve productivity.



Larger Operators Platform - allows for wider stance for improved safety and fatigue reduction.



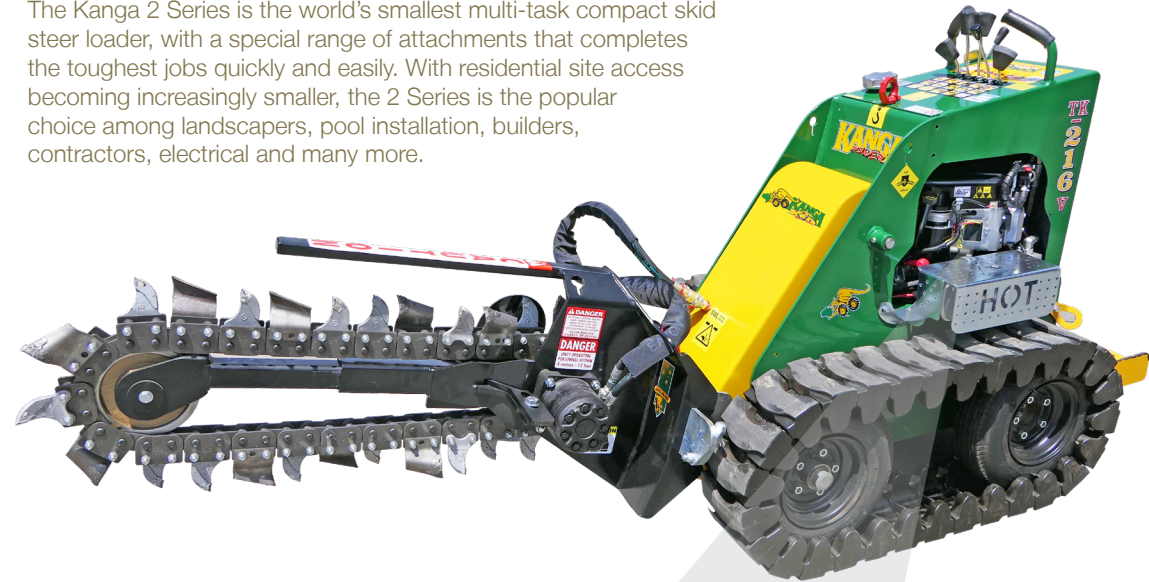
Back Protection Bars - Operator enclosed within operating platform. Also provides additional support when on rough terrain.

Stability carrying the load with generous bucket rollback - Easy filling and safe transportation without load spillage, arms fully lowered (lower centre of gravity).



THE WORLDS SMALLEST MINI-LOADER

The Kanga 2 Series is the world's smallest multi-task compact skid steer loader, with a special range of attachments that completes the toughest jobs quickly and easily. With residential site access becoming increasingly smaller, the 2 Series is the popular choice among landscapers, pool installation, builders, contractors, electrical and many more.



- Fuel Efficient Operation
- High Output Performance
- Reliable
- Easy to Use and Maintain
- Quiet
- Easy Start



16hp Small Block V-Twin

Vanguard is the commercial arm of Briggs and Stratton, the world's largest producer of small four-cycle engines.

Producing power equipment for over 40 years, Briggs and Stratton's "Cooler / Cleaner Technology" reduces engine and oil temperatures by up to 25-30 degrees while also pre-filtering air before pushing it into the air cleaner.

A poly core housing helps reduce noise coming from the engine.

Since inventing the mini loader in 1981, Kanga have continued to lead the industry in SAFETY, INNOVATION and PERFORMANCE. Australian owned and built, Kanga adheres to government guidelines for Workplace Health and Safety and operates under World's Best Practices.

BUCKETS

STANDARD BUCKET 0K11630
0.08m³ Open shape helps prevent sticky materials from clogging. Volume sized to rated load capacity cannot be exceeded when brim filled with heavy materials, wet sand or gravel. Ideal for everyday use, shifting sand and soil, clean up and backfill.



4 IN 1 BUCKET 0K60063
0.1m³ Enables front blading, back blading, plus all the advantages of a regular bucket. Open jaws to dump at full height. Use jaws for stump, post and tent peg pulling, lifting, placing rail road ties and rocks, broken tree limbs & broken concrete etc.



MULCH BUCKET 0K50135
0.16m³ For handling bulky, light materials such as bark chips, mulch and sawdust, quickly and easily. Straight cutting edge to scrape floors clean. Use in horse stables, stud farms and feed lots etc.

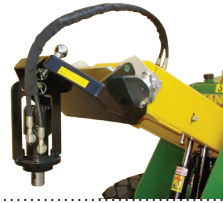


RUBBLE BUCKET 0K50191
Ideal for preparing difficult rocky soil for sod and turf. For removal of unwanted rocks and sticks, leaving soil behind. Makes light work of the most difficult site conditions.

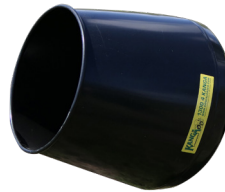


POWER HEAD

HI TORQUE POWER HEAD 0K30401
Driving head for augers (150mm - 500mm) as well as mixer bowl.



MIXER BOWL 0K50001
Convert Kanga into a mobile concrete mixer. No more hauling materials to the mixer or concrete to the job. Easily lifting and placing concrete over low walls or into post holes etc. Requires an Auger Power Head attachment (0K30401).



AUGER EXTENSION L130881
Fits between power head and auger to increase digging depth.



AUGERS

150mm (6")	L130810
230mm (9")	L130850
300mm (12")	L130890
350mm (14")	L130894
Tree planting	500mm (20") L130900



LAWN & GARDEN CARE

LAWN AERATOR 0K50405
For aerating or coring lawns for improved growth and lawn quality. 660mm (26") wide.



TURF CUTTER 0K50180
With only one moving part (front roller) is virtually maintenance free. The front roller provides stability to set required cutting depth ensuring easy effortless control for removing old turf, transplanting sod, removing turf prior to trenching and replacing it when trenching is completed. 300mm (12") wide.



CARRYALL LEVELLER 0K50110
900mm (35") Wide
For transporting bulky items, paving tiles, cement bags, nursery plants, sod, turf and fence palings. Ideal for preparing top soil for sod or turf laying and levelling bedding sand for pavers.



HYDRAULIC ANGLE BLADE 0K85003
900mm (36") Wide
Backfill Blade ideal for backfilling trenches, pushing loose soil, feed lot clean-out. Fingertip hydraulic controlled side shift tilts blade from left to right.



ROTARY TILLER 0K83701
750mm (30") Wide
Heavy duty tiller turns the toughest ground into beautiful garden bed, sod and turf bed preparation. Cutting depth 150mm (6") deep



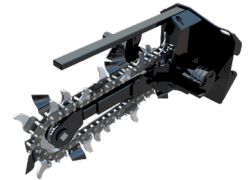
BRUSHES

BUCKET BROOM 0K50303
Clean up all manner of debris and leave your construction site clean. Self loading bucket, ideal for side walks, parking lots, factories, industrial sites and feed lots etc. Reverse rotation to push snow and gravel. Broom swings away automatically as bucket is emptied.



TRENCHERS

TRENCHER 0K42025
600mm maximum depth, 100mm width. Ideal for irrigation, garden lighting, drainage trenches.



MULTI TOOLS

TOW HITCH 0K30404
Use your Kanga Loader to manoeuvre caravans, trailers and boat trailers in the most confined parking lots, back yards or drive ways. Allows a zero turning radius for most trailers. (0K5061).



RIPPER/HOOK 0K30403
Ideal for ripping hard ground before digging with bucket. Also able to be used as a lifting hook.



SPECIALIST

VINYL STRIPPER 0K50220
Quickest way to remove floor coverings including vinyl, carpet, wooden floor and even scraping the adhesive used.



A vast selection of attachments are available specifically for the Kanga 2 Series enabling your skid steer to complete the toughest jobs quickly and easily.

INNOVATING SINCE 1981

KANGA - THE WORLD'S FIRST MINI LOADER

Since being established in 1978 as Jaden Engineering the Kanga Loader has been a source of innovation in the multi-task compact skid steer market. Starting with the original idea and prototype in 1980 and developing through with the first production model in 1981 Kanga have been constantly setting the standard higher.



1978



1980



1981



1984



1985



1986



1988

1978

The original idea - a motorized wheel barrow

1980

The first prototype a walk behind, slow and awkward

1981

The first stand on unit was produced and manufactured based on the initial prototype.

1984

First maxi prototype originally called the Dingo 1000

1985

Jaden Maxi only 3 cyl, 22hp Kubota Diesel Engine. Manufacturing rights illegally sold, resulting in renaming to the Jaden Loader

1986

Mk1 a major design revision adding horse power with improved poise and balance

1988

2 Series - long range fuel tanks beginning to be developed

1989

3 Series - long range fuel tanks, standard colours Awarded the Australian International Design Award

1996

4 Series - First model with 10" wheels & larger fuel tanks

1997

Renamed as the Kanga with the start of export to North America & New Zealand

1999

24HP Vee twin engines introduced to the 4 series

2000

5 series - an evolution from the 4 series with safety leading to auto AUX cutout

2002

Kanga Kid Mini Skid Loader, introduced the smallest on the market

2002

The Kanga Kid Track Mini Skid Loader released - the smallest track machine in the world

2004

6 & 7 series released

Finalist Australian Export Award

Winner Premier of Queensland Export Award

2006

25HP 2 speed 8 series released, the largest and most powerful model in the range

2007

Highly commended Innovative Product of the Year; Manufacturing - Endeavour Award, Manufacturer's Monthly

5-6-7-A series updated to 4 wheel motors, wider platform increasing performance and comfort

2008

Commenced development of the Kanga Remote Loader and first prototype released

2009

Kanga was acquired by Digga Australia

2010

Kanga Warrior was released

2011

Kanga Remote Loader re-released

2013

Kanga Midi Range Loader released

2014

Kanga release the Kanga Klean program which was an industry first in emissions reduction.

2016

Kanga release DT835 the most powerful Kanga mini loader with new Korr lighting



2016



2015



2014



2013



2011



2010



2007



1989



1996



1999



2000



2002



2004



PERFORMANCE	TK216V		KK216V	
Max. Lift Capacity	100 kg	220lbs	100 kg	220lbs
Travel Speed	5.4 km/h	3.4 mph	5.4 km/h	3.4 mph
Loader Bare Weight	476kg	1049bs	475kg	1047 lbs
Loader Weight (Including 4in1 Bucket - 40kg)	516kg	1137lbs	515kg	1135 lbs
Fuel Capacity	8.5 L	2.25US gal	8.5 L	2.25US gal
Fuel Type	Petrol		Petrol	
ENGINE	TK216		KK216	
Manufacturer	Vanguard 305777		Vanguard 305777	
Power	11.8 kW	16hp	11.8 kW	16hp
DRIVE SYSTEM	TK216		KK216	
Drive Control	Soft Touch Hand Levers		Soft Touch Hand Levers	
Throttle Control	Hand Levers		Hand Lever	
Tracks/Wheels	Tracks, Direct Drive Hydraulics Motors		Wheels, Direct Drive Hydraulic Motors	
HYDRAULICS	TK216		KK216	
Gear Pump Displacement	8 cc/rev	0.488cu.in/rev	8 cc/rev	0.488 cu.in/rev
Pump Output	24 L/min	6.3 US gal/min	24 L/min	6.3 US gal/min
System Pressure	186 bar	2700psi	186 bar	2700psi
Hyd. Reservoir Capacity	51.5 L	13.6 US gal	51.5 L	13.6 US gal
BUCKETS	TK216		KK216	
Standard & 4 in 1 Bucket Capacity	0.075 m ³	2.65 cu.ft	0.075m ³	2.65 cu.ft
DIMENSIONS	TK216		KK216	
A Max Operating Height	1580mm	62.2"	1570mm	61.8"
B Height to Hinge Pin	1185mm	46.7"	1175mm	46.3"
C Overall Height	1210mm	47.6"	1200mm	47.2"
D Overall Length With Bucket *	2070mm	81.5"	2070mm	81.5"
E Overall Track Width	800mm	32.3"	770mm	30.3"
F Bucket Reach at 40° *	340mm	13.4"	330mm	13"
Bucket Max Reach (Level) *	840mm	33.1"	850mm	33.5"
G Dump Height Std. Bucket *	595mm	23.4"	585mm	23"
Dump Height 4 in 1 Bucket	1185mm	46.7"	1175mm	46.3"
H Bucket Width	800mm	31.5"	800mm	31.5"
I Bucket Max Roll Back	36°		36°	
J Bucket Max Dump Angle	48°		48°	
K Ground Penetration	435mm	17.1"	445mm	17.5"
L Overall Length Less Bucket	1560mm	61.4"	1560mm	61.4"
M Ground Clearance	160mm	6.3"	150mm	5.9"
N Angle of Departure	36°		35°	
Approach Angle	90°		90°	

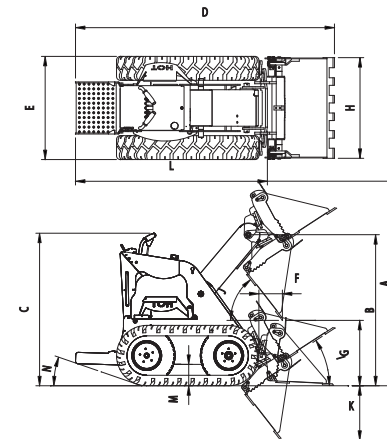


Australian Designed
 Australian Made
 Australian Owned
 Engine Warranty*
 - Petrol 3 Years/Unlimited
 Commercial Product Warranty -
 2 Years/1000hrs*
 *Warranty Conditions Apply



Telephone: 1300-4-KANGA

For the complete range of Kanga Loaders, visit
www.kangaloader.com



Dealer Stamp

* The Power ratings of the engine indicated in this document are the power of the production engine only and are measured in accordance with SAE J 1349 and SAE J1995 at 3600 rpm. Mass production engines may vary from this value, Actual power output for the engine installed in the final machine may vary depending on numerous factors, including operation speed of the engine in application, environmental conditions and other variables.